

# Guidelines for COVID-19 Epidemiological Investigations

Chinese Center for Disease Control and Prevention

These guidelines are based on the most recent research on the epidemiology of COVID-19 from home and abroad and are intended to further improve epidemiological investigations of COVID-19 cases to control spread of the virus.

## Purpose

1. To investigate source of infection and trace and identify close contacts;
2. To investigate onset of illness and treatment of patients, including clinical characteristics and risk factors;
3. To investigate and analyze transmission characteristics of COVID-19 cases and clusters of cases.

## Scope

The guidelines cover investigation of COVID-19 suspected cases, confirmed cases, asymptomatic infected persons, and clusters of cases.

## Content and Methods

### Case Investigation

The county (district) level disease control and prevention agency, upon receiving a report of one or more COVID-19 cases, should complete an initial epidemiological investigation within 24 hours. The investigation can be conducted through review of documents and interviews with patients, physicians, acquaintances, and others as needed. When a patient has completed a 14-day period of isolation and health monitoring, the county (district) level disease control and prevention agency should obtain information on specimen collection and testing for inclusion in the case report.

Case investigation should include basic demographic and identification data and information on onset of symptoms, care-seeking behavior, risk factors, potential exposures, and laboratory findings of suspected cases, confirmed cases, and asymptomatic infected persons. For suspected cases, this information is to be recorded

in a Case Investigation Questionnaire (Appendix S1) that includes identifying information such as name, gender, and ID number. Information about individuals identified as close contacts should be recorded in the Health Status Monitoring Case Form for Close Contacts in the *Guideline for Investigation and Management of Close Contacts of COVID-19 Cases*.

### Investigations on Clusters of Cases

A cluster of cases is the detection of 2 or more confirmed cases or asymptomatic infected persons in a small area (e.g., in a family, an office, a school class, or workplace) within a 14-day period and that has the possibility of person-to-person transmission or a common exposure.

Based on case reports in the Infectious Disease Reporting Information Management System (IDRIMS) and case investigation findings potentially meeting the above definition, the county (district) level disease control and prevention agency should immediately launch an investigation into a possible cluster of cases. Investigations should include information on source of infection and close contacts. The investigation should focus on epidemiological links among cases; chains of transmission and transmission routes should be analyzed. For investigation and analytic methods, refer to Appendix S2.

### Organization and Implementation

Using the principle of “localized management,” health authorities of the county or district where the individual being investigated sought medical care shall have the disease control and prevention agency conduct an epidemiological investigation of the case or cluster of cases. The investigating agency should promptly establish an investigation team, clarify the purpose of the investigation, develop an investigation plan, select team members, and assign duties and tasks. During all investigations, investigators should use proper personal protective equipment. Professionals from disease control and prevention agencies at the prefecture, provincial, and national levels should accompany county or district level teams when

requested or when deemed necessary.

## Analysis and Reporting

Upon completion of an investigation of confirmed cases, asymptomatic infected persons, or cluster of cases, the county (district) level disease control and prevention agency should submit a case investigation form or investigation report to the online reporting system. The local CDC should review the submitted report and update it in a timely manner as the investigation progresses.

For investigations of clusters of cases, all basic information and all initial, interim, and final reports should be submitted in accordance with the *National Protocol for Reporting and Management of Public Health Emergency Related Information (Trial)*. All key information of these investigations (see Appendix S2) should be included in the final report.

**Acknowledgement:** *China CDC Weekly* would like to thank Xijuan Fu of the WHO China Office, Canjun Zheng, Liping Wang, Zhaorui Chang, Zhongjie Li, Lance Rodewald, and Huilai Ma

of China CDC for their contributions in translating and editing this this document (1).

The Chinese document written by experts in China CDC Strategy and Policy Working Group for COVID-19 Emergency Response, including Zijian Feng of China CDC, Canjun Zheng, Zhaorui Chang, Fengfeng Liu, Mengjie Geng, Junling Sun, Sheng Zhou, Lu Ran, Huilai Ma, Liping Wang, Zhongjie Li of Division of Infectious Disease, Key Laboratory of Surveillance and Early Warning on Infectious Disease, China CDC, Hui Chen of National Center for Tuberculosis Control and Prevention, China CDC, Jingwei Jiang of National Institute for Communicable Disease Control and Prevention, China CDC, and Jian Li of National Center for AIDS Control and Prevention, China CDC.

---

Submitted: March 14, 2020; Accepted: March 14, 2020

## References

1. Chinese Center for Disease Control and Prevention. Technical documents for COVID-19 prevention and control. [http://www.chinacdc.cn/jkzt/crb/zl/szkb\\_11803/jszl\\_11815/202003/t20200309\\_214241.html](http://www.chinacdc.cn/jkzt/crb/zl/szkb_11803/jszl_11815/202003/t20200309_214241.html). [2020-3-9]. (In Chinese).

## Appendix S1

### Investigation Questionnaire for COVID-19 Cases

Questionnaire number: \_\_\_\_\_ ID number: \_\_\_\_\_

#### I. Basic information

1. Name: \_\_\_\_\_

2. Sex:  Male  Female

3. Imported case from outside China:  Yes  No

If yes, please fill in the following:

Country(ies) and region(s) of residence or travel before entry (multiple answers possible):  
\_\_\_\_\_

Country(ies) or region(s) where transfer(s) were made before entry: \_\_\_\_\_

Nationality: \_\_\_\_\_ Passport Number: \_\_\_\_\_

Point of entry: \_\_\_\_\_ of \_\_\_\_\_ Province (e.g., airport, train station, or wharf)

Date of entry: \_\_\_\_\_ (dd)/(mm)/(yyyy)

Transportation (e.g., flight, train, or ship number): \_\_\_\_\_

#### II. Onset of symptoms and care-seeking behavior

4. How was the individual identified:

- voluntary care seeking  via close contact management  
 at border screening  through active population screening  
 through routine surveillance of influenza-like illness or SARI  other \_\_\_\_\_

5. Date of hospital admission: \_\_\_\_\_ (dd)/(mm)/(yyyy)

6. Symptoms and signs at admission:

- Fever: maximum temperature \_\_\_\_\_ °C  
 chills  dry cough  sputum  nasal congestion  rhinorrhea  sore throat  
 headache  fatigue  muscle soreness  arthralgia  
 shortness of breath  dyspnea  chest tightness  chest pain  conjunctival congestion  nausea   
 vomiting  diarrhea  abdominal pain  other \_\_\_\_\_

7. Are there any medical complications?  Yes  No

- If yes, please select (more than one selection is possible):  meningitis  encephalitis  bacteremia/sepsis  
 myocarditis  acute lung injury/ARDS  acute kidney injury  epilepsy  
 secondary bacterial pneumonia  other \_\_\_\_\_

8. Chest X-ray/CT consistent with pneumonia:  Not performed  No  Yes

9. Date of discharge: \_\_\_\_\_ (dd)/(mm)/(yyyy)

#### III. Risk factors and exposure history

10. Is the patient in any of these occupational groups:

- health care worker  microbiologist  not from a specific occupational group  
 personnel with wildlife contact  poultry and livestock farming workers  other \_\_\_\_\_

If yes for health care worker, please select:  doctor  nurse  field staff for disease control and prevention   
 laboratory staff  other \_\_\_\_\_

11. Is/was the patient pregnant:  Yes, pregnant for \_\_\_\_weeks  no
12. Past medical history (multiple selections possible):  none  hypertension  diabetes  cardiovascular and cerebrovascular diseases  asthma  chronic pulmonary ( chronic obstructive pulmonary disease,  other\_\_\_\_)  cancer ( lung cancer  other\_\_\_\_)  chronic kidney disease  chronic liver disease  immunodeficiency diseases  postpartum (within 6 weeks)  other\_\_\_\_
13. Lived in Wuhan and surrounding areas, or other domestic communities with reported cases:  
 travel history  residence history  none  
 If yes, please fill in: \_\_\_\_county/district \_\_\_\_ prefecture \_\_\_\_ province
14. Has the patient visited or lived in overseas country(ies) or region(s) with outbreaks:  
 travel history  residence history  no  
 If yes, please specify country(ies) or region(s): \_\_\_\_
15. Has the patient come in contact with a person who has fever and/or respiratory symptoms from Wuhan and surrounding areas or from a domestic community with a reported case/cases:  
 Yes  No  Unclear
16. Has the patient come in contact with a person who has fever and/or respiratory symptoms from overseas country(ies) or region(s) with outbreaks:  
 Yes  No  Unclear
17. Has the patient come in contact with a confirmed case or an asymptomatic infected person:  
 Yes  No  Unclear
18. Has the patient been involved in a cluster of cases in the same family, office, school, kindergarten or nursery, or workshop?  Yes  No  Unclear

#### IV. Laboratory testing

Record times and results of specimens collected and tested on **initial sampling and every sample until the last sample collected during isolation until discharge** (include positive and negative results for each specimen)

Specimen type	Sampling time (dd/mm/yyyy)	Test result(+/- /to be tested)
Throat swab		
Nasal swab		
Nasopharyngeal swab		
Sputum		
Tracheal secretions		
Tracheal aspirate		
Alveolar lavage fluid		
Urine		
Stool/rectal swab		
Blood (nucleic acid testing)		
Blood (IgM)		
Blood (IgG)		
Blood (IgM+IgG)		
Blood, with IgG increase of 4 times or more from initial to convalescent sample*		
Other (specimen type)		
None collected (do not fill in the sampling time or results)		

\*: If IgG in convalescent blood increased by 4 times over the initial sample, the test result is positive.

Investigating organization: \_\_\_\_\_ Investigator signature: \_\_\_\_\_

Investigation date: \_\_\_\_\_ (dd)/(mm)/(yyyy)

## Appendix S2

### Investigation and Analytic Methods for Clusters of COVID-19 Cases

#### I. Definition of cluster of cases

A cluster of cases refers to the detection of 2 or more confirmed cases or asymptomatic infected persons in a small area (e.g., in a family, an office, a school class, or workplace) within a 14-day period and that has the possibility of person-to-person transmission or a common exposure.

#### II. Detection

1. Through case investigation, find confirmed cases, suspected cases, and asymptomatic infected persons who have had close contact with a case or who may have had a common exposure with a case.
2. Through the Infectious Disease Reporting Information Management System (IDRIMS), search for confirmed cases, suspected cases, and asymptomatic infected persons working for the same employer, or those who have the same address and whose date of illness onset was within 1 or 2 incubation periods.
3. Through consolidating and reviewing case investigation reports, search for confirmed cases, suspected cases, and asymptomatic infected persons from different regions with the same exposure history, such as taking the same flight or train, or participation in a common travel group or attended a common conference within 14 days before onset of illness.

#### III. Investigation content

##### 1. Patients and close contacts

The investigation of clusters of cases should focus on: ① whether the patients and close contacts have a history of travel to or residence in Wuhan and its surrounding areas, other domestic communities with reported cases, or overseas countries or regions with severe outbreaks; ② whether they have been in contact with patients with fever or respiratory symptoms from Wuhan and its surrounding areas, other domestic communities with reported cases, or overseas countries or regions with severe outbreaks; ③ the type of contact, contact distance, frequency of occurrence, and personal protective measures taken; ④ case-related activity tracking; and ⑤ verification and registration of the name, ID number, and contact details of patients.

For the initial investigation, the time period for clusters of cases should not be limited to 14 days. The relevant suspected cases and asymptomatic infected persons should be included in the investigation. When the investigation is closed, a final determination should be made whether it was a cluster of cases based on epidemiological and laboratory findings.

The investigation of close contacts should focus on: ① the onset of symptoms and specimen collection and testing of close contacts; ② the types of close contacts, such as having meals together, living in the same household, sharing transportation, etc.; and ③ the health outcome of close contacts.

##### 2. Place of exposure

(1) Family exposures: investigate the number of family members living together and their contacts and personal protection; the household environment, including number of rooms, floor area, ventilation and air conditioning use, and hand washing facilities; and elevator use and status of building disinfection.

(2) Mealtime exposures: investigate the time, place, attendees and seating arrangements, dining environment, ventilation and air conditioning use, hand washing facilities, and behaviors that may lead to increased risk of transmission.

(3) Business exposures: investigate the number of workers; the distribution of work stations; the distribution of workshops; the type of work contact and the protection of workers in the workplace; the environmental health of the workplace, canteen/cafeteria, dormitory, toilet, and other relevant places; use of central air conditioning, air cleaning or circulation systems, and ventilation; hand washing facilities; elevator use; and disinfection.

(4) Means of transportation: investigate the means of transportation, seat distribution, ventilation and use of air conditioning, disinfection status, hand washing facilities, number of passengers, health conditions, and use of personal protective equipment.

(5) Public places: the length of stay in shopping malls, supermarkets, public baths, hotels, nursing homes, hospitals, wedding/funeral sites, and other public places where patients may have been exposed; number and density of people; personal protection; layout and floor area of public places; use of ventilation and air conditioning; use and disinfection of elevators; and hand washing facilities.

### 3. Sampling and testing

Specimen collection and testing should be done for all cases in accordance with relevant requirements. For special circumstances such as the index case of a cluster of cases, people suspected to be asymptomatically infected, or patients having transmitted during the incubation period, increase the frequency of sampling and testing. Use of two negative nucleic acid tests rather than relying on a single negative test, and collecting two serum specimens within 7 days and between 3-4 weeks after onset is recommended for future reference in these special circumstances.

## IV. Information analysis

### 1. Analysis of transmission chains

Draw epidemic curves according to the onset time of cases. Draw the onset time sequence diagram or case relationship diagram (see Figure S1) with information including the relation with the index case, the exposure history up to 14 days before onset and activities after onset of illness. Once completed, the transmission chain should be thoroughly analyzed in view of all available information.

### 2. Analysis of Generation of Infection

According to the epidemic curve, time sequence diagram, case relationship diagram, information of incubation period, and exposure history, determine the generation of each case. The following principles can be referred to in determining the generation of each case.

The first generation is usually the case with the earliest onset, i.e. the index case of a cluster of cases. If asymptomatic infected persons or transmission during the incubation period is suspected, comprehensive analysis and determination should be based on epidemiological investigation and laboratory testing results.

In principle, the following three criteria should be met for determining the second generation of cases: ① history of contact with the first generation case within 14 days before onset of illness; ② within 14 days before onset, the patient has never visited or lived in Wuhan and surrounding areas, in other domestic communities with reported cases, or in overseas countries or regions with severe outbreaks; ③ within 14 days before onset, there was no other suspected exposure history, such as visiting a hospital or a community with ongoing virus transmission.

These three criteria for determining the second generation of cases can also be used for identifying third generation cases. If the patient has been in contact with the previous two generations within 14 days before onset, the generation cannot be confirmed.

### 3. Analysis of the incubation period

The following three criteria should be met to accurately calculate the incubation period for a single case: ① the second-generation case has a clear contact history with the index case; ② the second-generation case has had at least some short contact time with the index case; ③ the second-generation case has no other exposure history or contact history before onset other than with the index case.

In a cluster outbreak, if the incubation period of a single case is found to have exceeded the minimal and maximal value observed in existing studies, verifying whether the above criteria are met and confirm the accuracy of the onset time of the patient's illness and the contact time with the index case.

### 4. Analysis of infectivity during incubation

In a cluster outbreak, if the index case is determined to have been infective during the incubation period, the following three criteria should be met: ① the index case and the second-generation case did not have any clinical symptoms or signs of infection at the time of contact, and there was no contact history between these two cases after onset; ② the onset of illness for the second-generation case happened within 14 days after the last contact with the

index case; ③ the second-generation case had no other exposure history or contact history other than that with the index case.

It is recommended that sampling be done as early as possible for the index case during the investigation. If the sampling of the positive specimen of the index case is earlier than the onset of the second-generation case, the evidence is considered to be stronger. In addition, it is recommended to collect two serum specimens within 7 days and between 3-4 weeks after onset of illness of the index case for future reference.

#### 5. Analysis of infectivity of asymptomatic infected persons

In a cluster of cases, if an asymptomatic infected person is determined to be the source of infection, the following three conditions should be met: ① the asymptomatic infected person and the second-generation case have a clear contact history, and the second-generation case, after his/her onset of illness, has no history of contact with the asymptomatic infected person; ② the onset of the second-generation case happened within 14 days after the last contact with the asymptomatic infected person; ③ the second-generation case had no other relevant exposure history or contact history than with the asymptomatic infected person.

It is recommended that sampling be done as early as possible during investigation. If sampling in the case of positive specimens of the asymptomatic infected person was earlier than the onset of the second-generation case, the evidence is considered to be stronger. In addition, it is recommended to collect serum specimens on the day of investigation and again 3-4 weeks later for future reference.

#### 6. Analysis of transmission routes.

During field investigations, make sure the following information is collected: type of contact, contact distance, length of contact time, personal protection during contact, hand hygiene and other relevant conditions. Investigate the floor area of the exposure site, density of people, and the ventilation and air conditioning used to comprehensively analyze possible routes of transmission.

For a cluster of cases related to a closed space such as an airplane, a carriage in a high-speed train, an Internet bar, or a karaoke bar, analyze the correlation between development of illnesses of individuals and the index case in terms of seat distance, duration of short-distance conversation, toilet exposure, hand hygiene, and personal protection. If the time and spatial distribution of cases cannot be explained by droplet transmission or contact transmission and the possibility of aerosol transmission is suspected, it is recommended to collect air samples and environmental smears and swabs from the cabin, high-speed train carriage, toilet, or other relevant places to test the virus content and activity.

### V. Report outline

#### 1. Background

Describe the process of event detection and the general situation of the local outbreak including the number of cases, deaths, and case fatality rate.

#### 2. Epidemiological investigation

(1) Describe the total number and classification of cases (including confirmed cases, suspected cases and asymptomatic infected persons), severe cases, and deaths.

(2) Describe each case by onset date including the basic information (name, age, gender, occupation, residential address at the time of onset, and ID number); progression of symptoms, diagnosis, and treatment; clinical manifestations; specimen collection and testing; progression and outcome of disease; exposure history; close contacts; tracking of activities after onset; and personal protective measures.

(3) According to the case investigation results, draw the epidemic curve, time sequence diagram, and case relationship diagram, then organize and summarize the key information of the cluster investigation and complete the form shown in Table S1.

#### 3. Investigation of place of exposure

Describe the environment of the exposure place, the number of people with a common exposure, personal contact and protection measures. If necessary, draw a diagram of the exposed area.

#### 4. Investigation of close contacts

Describe the relationship between the case and his/her close contacts, type and frequency of contact and the first and last contact time; determine the total number of close contacts, their outcomes, and the number of people involved.

5. Measures taken

Describe the type, time, and implementation of the prevention and control measures for the cluster.

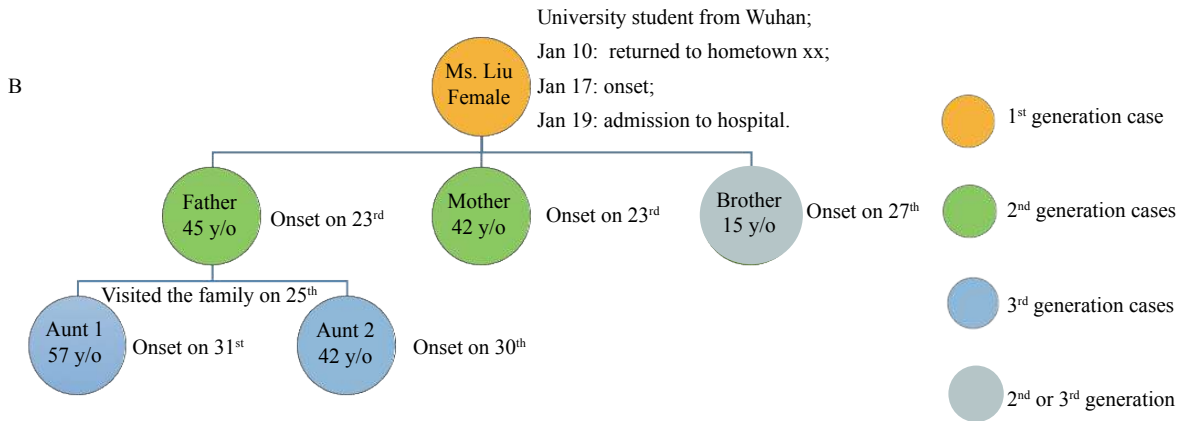
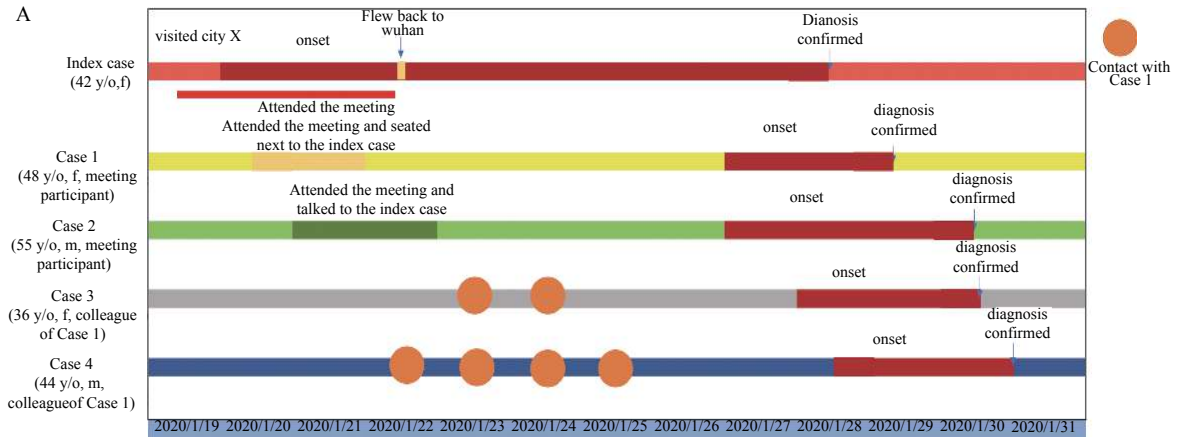
6. Investigation findings

Determine the generation of cases in the cluster, chains of transmission, and the source and route of transmission.

7. Recommendations

On the basis of the investigation findings and problems identified, propose targeted prevention and control recommendations.





SUPPLEMENTARY FIGURE S1. Sample diagrams of a cluster outbreak. (A) Temporal sequence of meeting/business clusters. (B) Relations in a family cluster. y/o=years old.

SUPPLEMENTARY TABLE S1. Registration form of key information of cluster cases

Cluster outbreak	Family cluster				Meal transmission			Other transmission type (please specify)		Transmission by asymptomatic infection(1 yes 2 no)				
	Number of susceptible people at exposure	Number of people with onset of illness	Attack rate (%)	Number of susceptible people at exposure	Number of people having onset	Attack rate (%)	Number of susceptible people at exposure	Number of people with onset of illness	Attack rate (%)					
											Transmission during incubation(1 yes 2 no)			
Case number	Generation number①	Name	Age(years)	Gender	ID number	Date of onset	Date of admission	Date of centralized isolation	Date of sampling of the first positive specimen	Contact history with the previous generation②		Travel history⑤	Other contact history⑥	
										Generation number of the case in contact	Date of first contact	Date of last contact	Place of contact③	Type of contact④

Note: ① Generation number: “1” for the first generation, “2” for the second generation, and so on; if there are 2 or more cases in the second generation, specify according to the order of onset, such as “2-1”, “2-2”, and so on; fill in “unknown” for cases whose generations cannot be determined; ② contact history with the previous generation: fill in the type of contact with the previous generation; the space can be left blank for the index case and cases with undetermined generation; ③ place of contact: please use numbers, 1-residence, 2-restaurant, 3-public transportation, 4-business, 5-public places (such as shopping malls, supermarkets, hotels, etc.), 6-hospital, 7-other (please specify); ④ type of contact: please use numbers, 1-family, 2-neighbors, 3-colleagues, 4-friends, 5-other (please specify); ⑤ travel history refers to travel history to Wuhan and its surrounding areas within 14 days before onset, other domestic communities with reported cases, or overseas countries or regions with severe outbreaks; use numbers, 1-yes, 2-no; ⑥ contact history with other cases: refers to contact except with the previous generation; use numbers, 1-yes, 2-no.