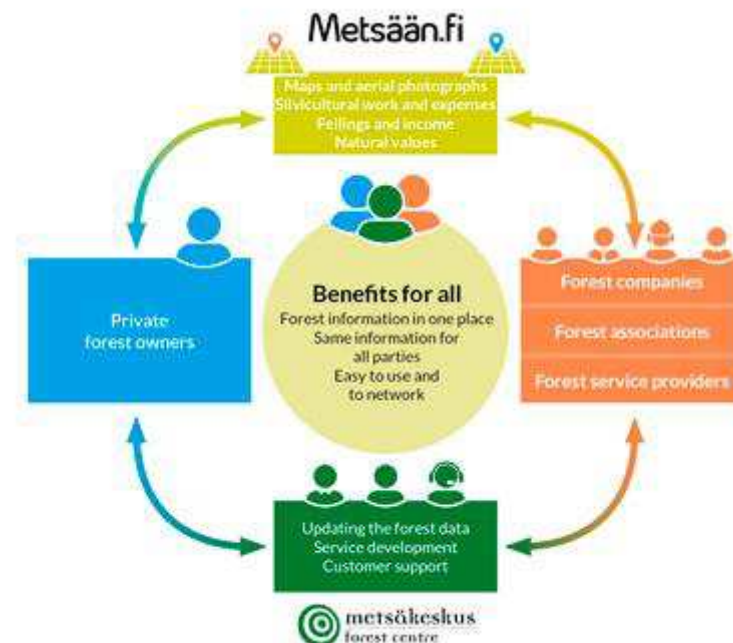


Metsään.fi - eServices for Forest Owners and Service providers

Metsään.fi is a portal through which people who own forest property in Finland can conduct business related to their forests from the comfort of their own homes. The portal connects owners with related third parties, including providers of forestry services. This makes it easy to commission management work and to be in touch with forestry professionals.



(<https://www.metsakeskus.fi/sites/default/files/kuva-metsaanfi-esittely-english-iso.jpg>)

Your own forest online

Metsään.fi is a portal which offers the latest information to forest owners on their properties. As soon as they log in, users can see what should be done in their forests right now. Information is displayed for each forest stand compartment, broken down by soil type, tree type and natural occurrence, and possible logging or forestry actions are suggested, including income and cost estimates. Maps and aerial photographs clearly show where properties are located and what they look like. Users log in securely using their online banking codes. The service is offered in Finnish and Swedish.

Online commissioning of forestry work

Forestry businesses, forest management associations and timber buyers can be found in the portal. Forest owners can check which service providers are available in the area surrounding the forest property, and, if necessary, authorise chosen partners to view their data or transfer them to their own systems. This makes it easy to get in touch with professionals regarding forestry and logging work. Service providers may also contact forest owners on their own initiative.

The portal saves service providers the cost and effort of visiting sites to obtain the latest data on which to base plans. It also contains up-to-date contact details for forest owners. The aerial photographs and maps are important tools for professionals, and for small businesses Metsään.fi may replace the need to have their own geographic information system or CRM system entirely. Most private Finnish forest owners are either in employment or retired, and a growing proportion live far from the forests they own. For most owners the forests are not a major source of income, and only a small fraction have professional forestry skills.

Based on extensive forest resource databases

The portal draws information from a national forest resource database, which is continuously updated with data obtained by laser scanning, aerial photography, sample plot measurements and site visits. This sort of data collection is a statutory task of the Finnish Forest Centre. Between surveys, information is maintained based on notifications received by the Forest Centre from forest owners and forestry organisations. Now, reports on completed work can also be submitted via Metsään.fi. Tree growth is factored into the data in the portal, and suggested actions are updated annually.

State-funded service

Development of the portal is funded by the Finnish Ministry of Agriculture and Forestry. Metsään.fi supports the fulfilment of many strategies and EU directives, including the EU Forest Strategy, the PSI and INSPIRE directives, the development of rural livelihoods and the promotion of biodiversity.

Metsään.fi is provided by the Finnish Forest Centre, which is a state-funded organisation for promoting sustainable forestry and forest-based livelihoods. The portal is free of charge. Businesses can define in which areas they want to operate.

Leaflet about Metsään.fi-eService (<https://www.metsakeskus.fi/sites/default/files/metsaanfi-eservices-for-forest-owners-broschyr.pdf>)

Metsään.fi

*Plan, manage online, find
resources, provide services*

**eServices
for forest
owners
and service
providers**



metsäkeskus
forest centre

The forest owner decides who may access the data

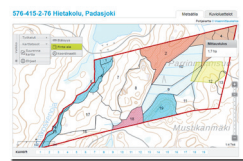
Metsään.fi - Your online forest

- ❖ Shows the information and opportunities of each forest estate
- ❖ Information about trees, soil and nature
- ❖ Planning what to plant, cut or protect
- ❖ Estimation on costs and earnings of forest operations
- ❖ Forest owners can easily share information and resource needs for service providers
- ❖ Secured login and user authentication

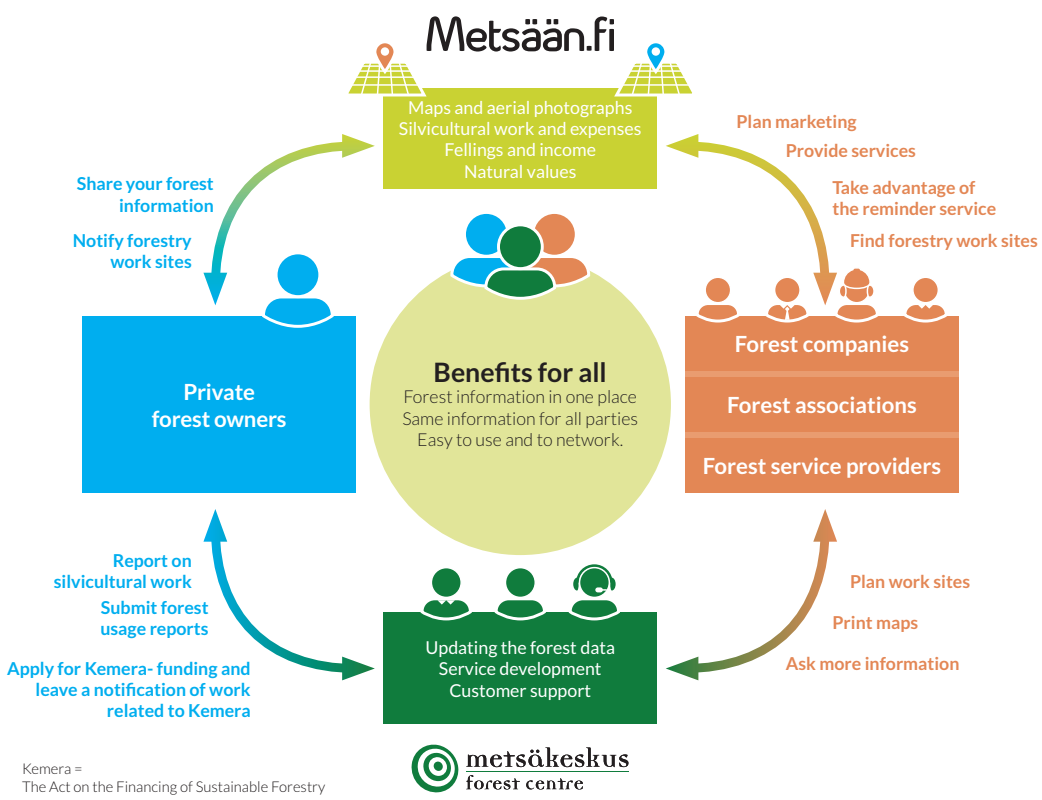
A “one-stop shop” principle

An independent meeting point for forest owners and service providers

- ❖ Forest owners, service providers and Forest Centre can access the same information
- ❖ Forest owners and service providers can:
 - ❖ Inform the Finnish Forest Centre when work is completed
 - ❖ Submit forest usage notifications and subsidy applications



The aerial photographs and maps are important tools for professionals, and for small businesses. Metsään.fi may replace the need to use a separate geographic information system or CRM.



Using eServices forest owners and service providers can fill in e-forms instead of paper ones—simple and easy.

The service is offered in Finnish and Swedish.

Metsään.fi is a service provided by the Finnish Forest Centre and funded by the Finnish Ministry of Agriculture and Forestry. eServices for forest owners and service providers are free of charge. Metsään.fi supports the fulfilment of many strategies and EU directives, including the EU Forest Strategy, the PSI and INSPIRE directives, the development of rural livelihoods and the promotion of biodiversity.



The Finnish Forest Centre is a state-funded organisation covering the whole country. We are tasked with promoting forestry and related livelihoods, advising landowners on how to care for and benefit from their forests and the ecosystems therein, collecting and sharing data related to Finland's forests and enforcing forestry legislation. The Finnish Forest Centre operates under the guidance of Ministry of Agriculture and Forestry.

www.metsakeskus.fi

