

Evaluating S3 implementation

Angelita Luciani

Tuscany Region

#RIS3Toscana
#RIS3ToscanaMTR

Ancona, 16th March 2018

Presentation outline

- Tuscany in brief;
- Tuscany RIS3;
- Strategy implementation;
- On-going steps.



Tuscany in brief



Tuscany in brief: main features

Population: **3.742.437 inhab**

Area: **23.000 km²**

GDP per capita: **€ 29.466**

Registered companies: approximately **351.000** (ISTAT- 2015)

Around **95%** of companies have less than 10 employees (ISTAT- 2015)

Around **5%** of companies have less than 20 employees (ISTAT- 2015)

Manufacturing: over **32%** of regional workforce (ISTAT- 2015)

Employment rate **69,9%**

Population with higher education: **10%**

R&D expenditure as a % of GDP: **1,36%** (40% from private sector)

University size: **150.000 students.**



Tuscany in brief: the manufacturing system

Fashion:

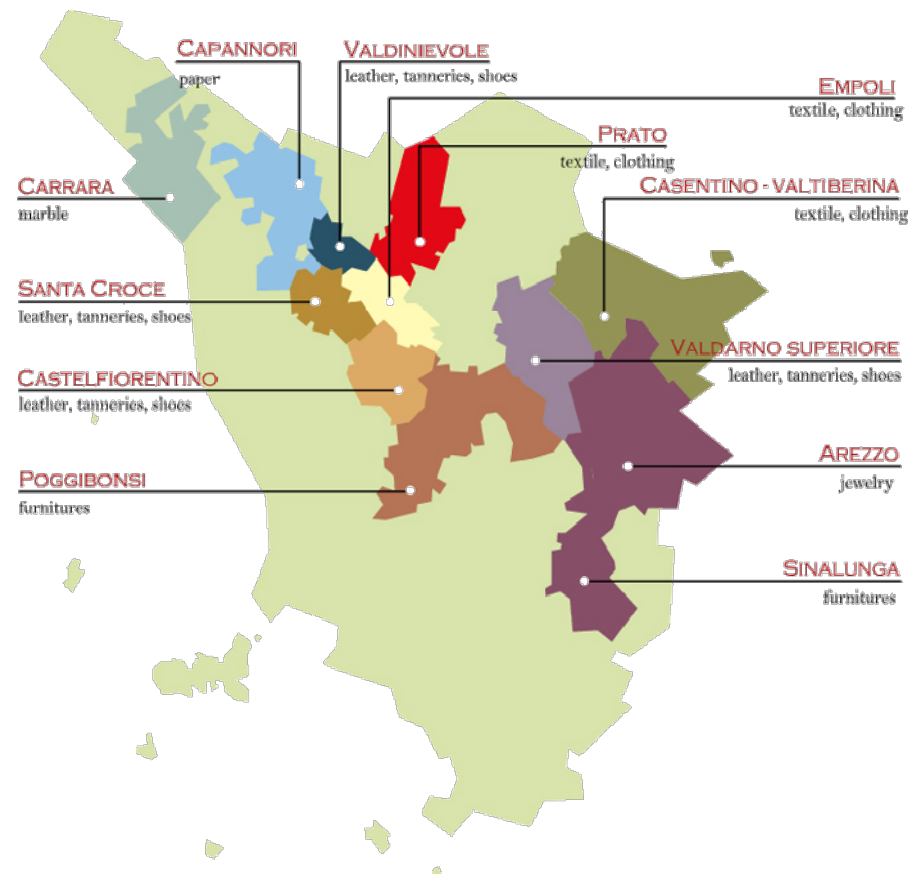
- Textile, Clothing,
- Shoes, Leather,
- Tanneries,
- Jewellery

Paper

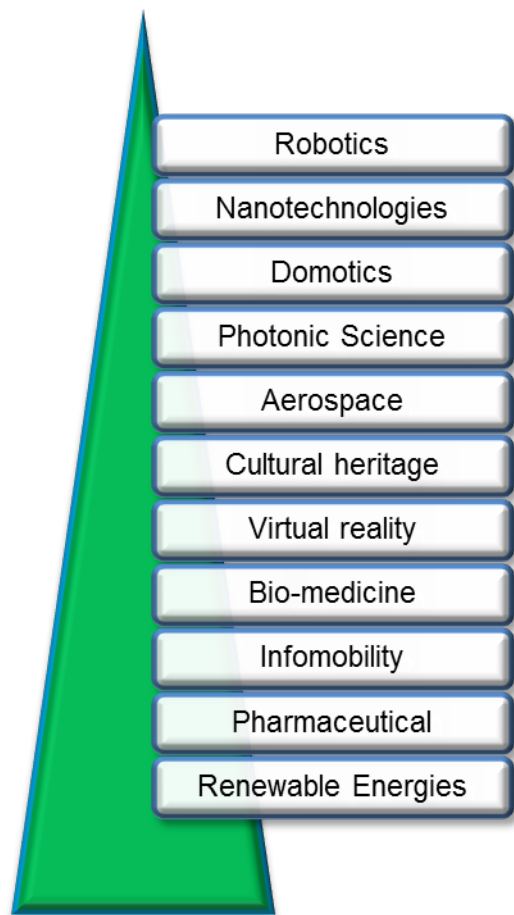
Interiors:

- Marble, Furniture
- Furnishing

Shipbuilding



*Tuscany in brief: **fast growing sectors***



Emerging Clusters
operating in **fast
growing sectors** and
able to compete in
international markets

Tuscany in brief: good quality of R&D

University System (UNIFI, UNISI, UNIPI, S.S. Normale, SSSA, IUE, IMT).

Most relevant **research centers**:

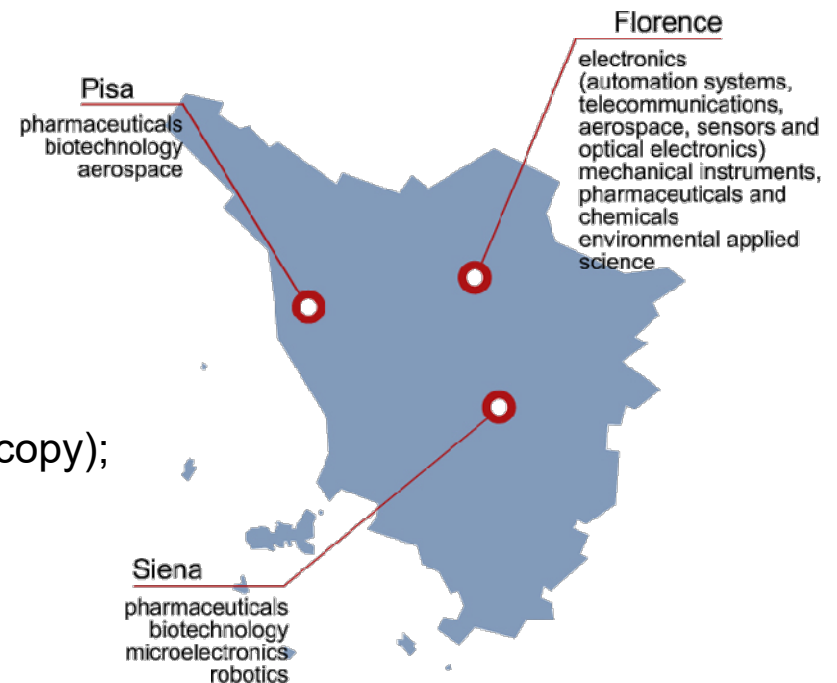
CNR (National Research Council);

INFN (Nuclear Physics National Institute);

CERM (Magnetic Resonance Research Centre);

LENS (European Laboratory for Non-Linear Spectroscopy);

EGO (European Gravitational Observatory).



Tuscany RIS3



Tuscany RIS3: objectives & priorities

- 1) **Investing on excellences;**
- 2) **Mitigating imbalances.**

ICT Photonics

Smart Factory

Chem&Nanotech

Strong focus

- Enhancing “dynamic” companies towards strategic investments in R&D;
- Horizontal policies to activate backwards linkages.

Tuscany RIS3: *budget*

Direct Support (ERDF – EAFRD)

R&D	108M€
Innovation	305M€
Enabling initiatives	445M€

Total	858M€
--------------	--------------



Undirect Support

Digital Agenda
ESF ROP
Regional Development Programme



778M€



Governance

Regional Steering Committee

S3 Observatory (Mirror group)

Monitoring system

Annual reports highlighting financial and physical progress through:

- Strategy indicators
- Expected results
- Output indicators (from ESI funds AIRs)
- Payments

Evaluation

Specific evaluation reports and analysis

ESI funds evaluation activities

Tuscany RIS3: *monitoring*

OBJECTIVES

Strategy sound financial management and implementation

Complementarity and synergies with National Smart Specialisation Strategy and other national R&D support instruments

Enhancing regional assets in S3 Thematic platform and other EU instruments along interregional cooperation logics



Strategy Implementation (2014-2016)



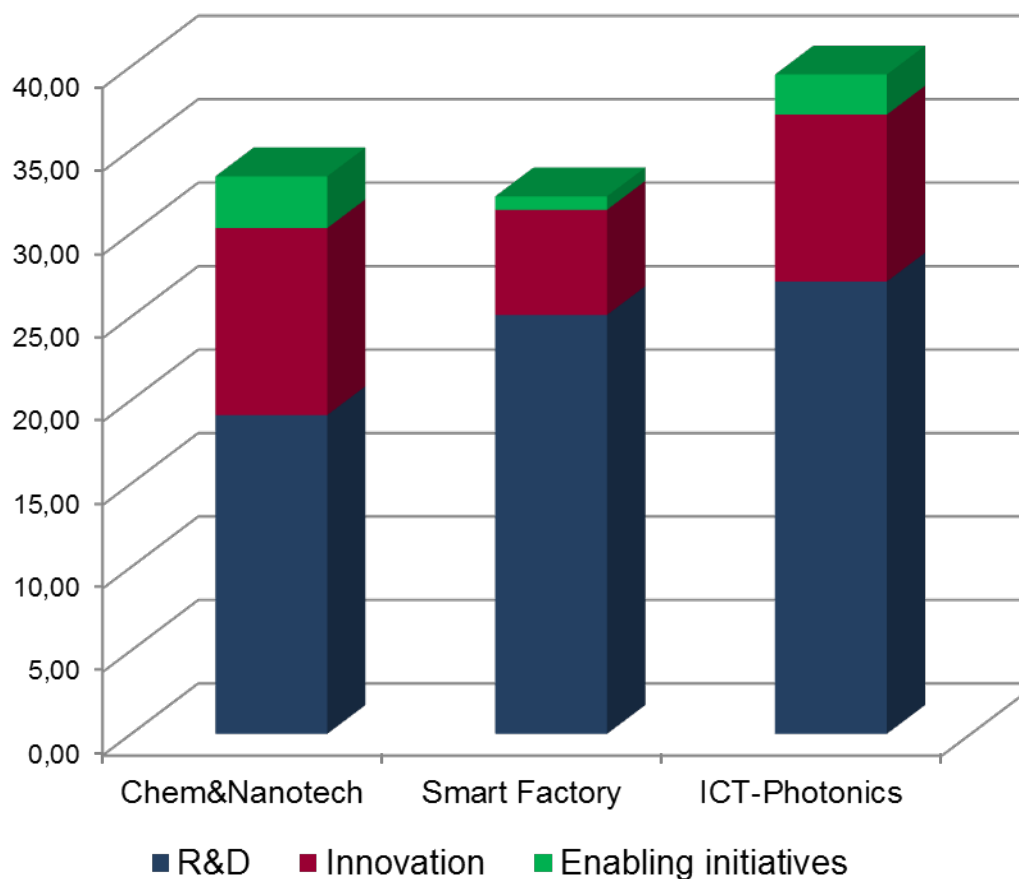
RIS3 implementation: main priorities

R&D
92,8M€ (108M€)
86%
547 projects

Innovation
46,2M€ (305M€)
15%
603 projects

Enabling initiatives
124,5M€ (435,6M€)
28%
405 projects

**ESIF contribution in M€ to RIS3 priorities
(TO1 and TO3)**



RIS3 implementation: main roadmaps

R&D Support

- 1) **ICT-Photonics**: medical&Industrial applications;
- 2) **Smart Factory**: automation&mechanics for manufacturing;



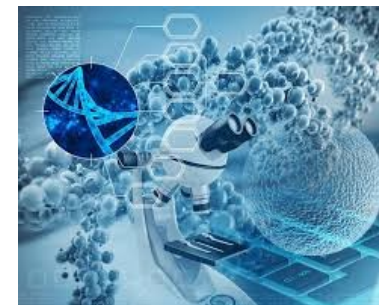
Innovation Support

- 1) **Chem&Nanotech**: agrifood and enviromental applications;
- 2) **ICT-Photonics**: platforms and IT services for manufacturing;



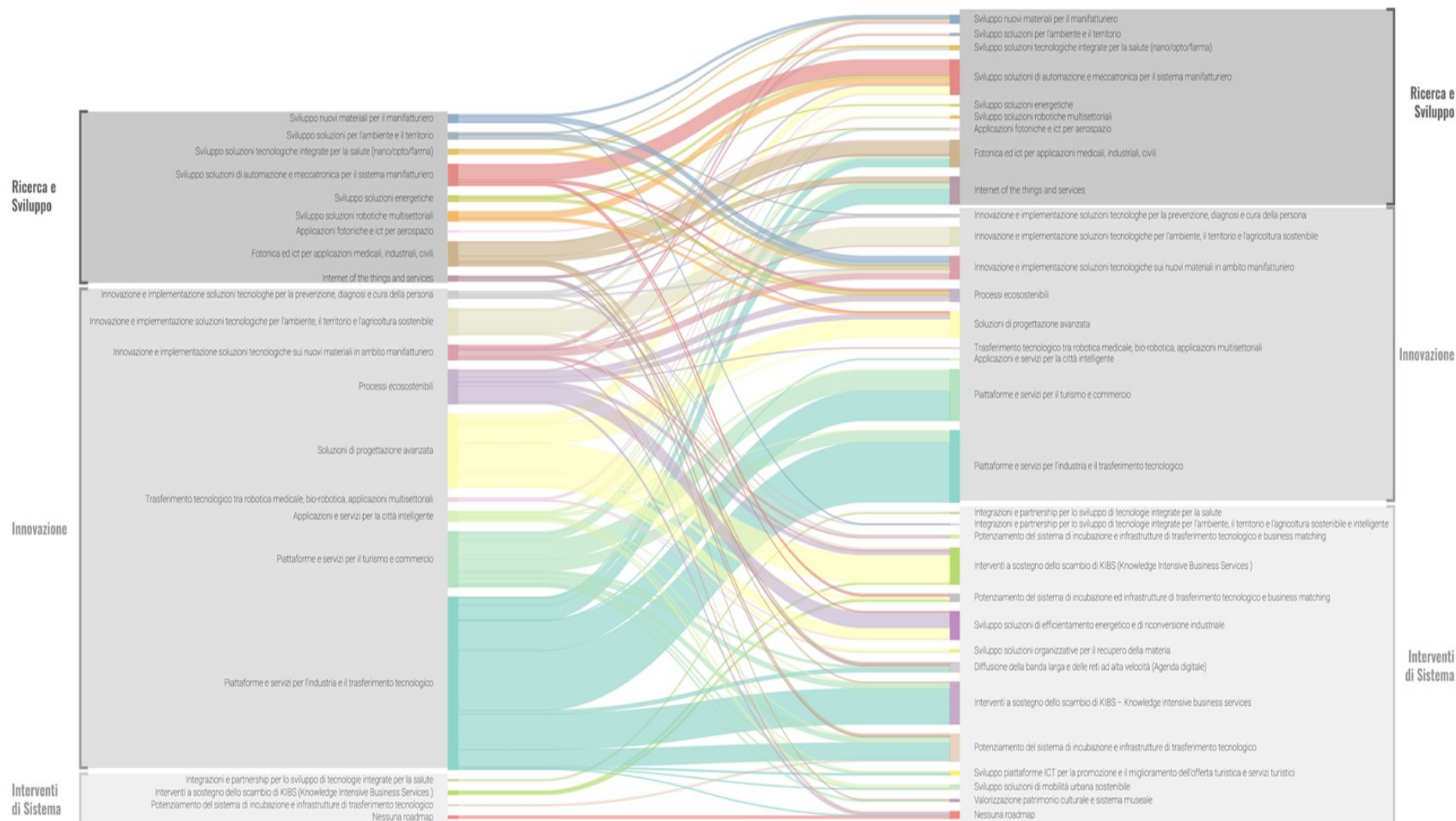
Enabling Initiatives Support

- 1) **Chem&Nanotech**: Integrated health solutions;
- 2) **ICT-Photonics**: tech transfer infrastructures;



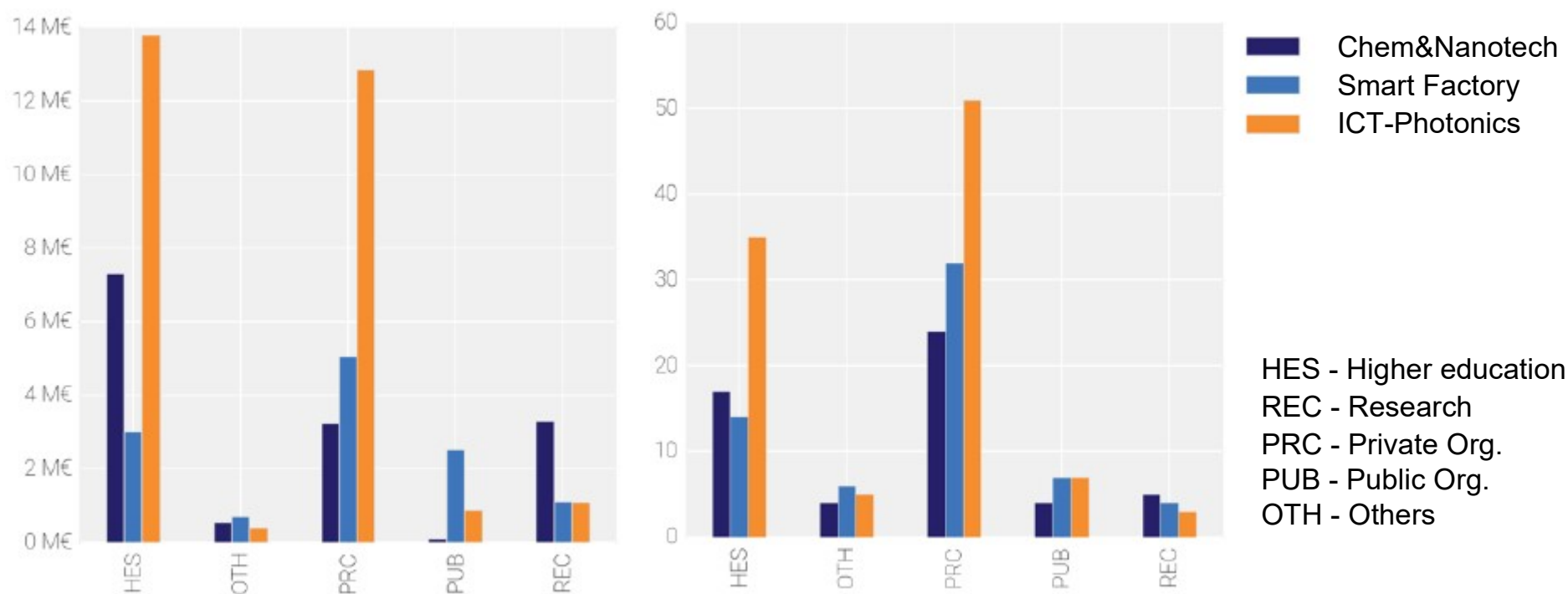


RIS3 implementation: semantic analysis



(Source: own elaboration on regional data)

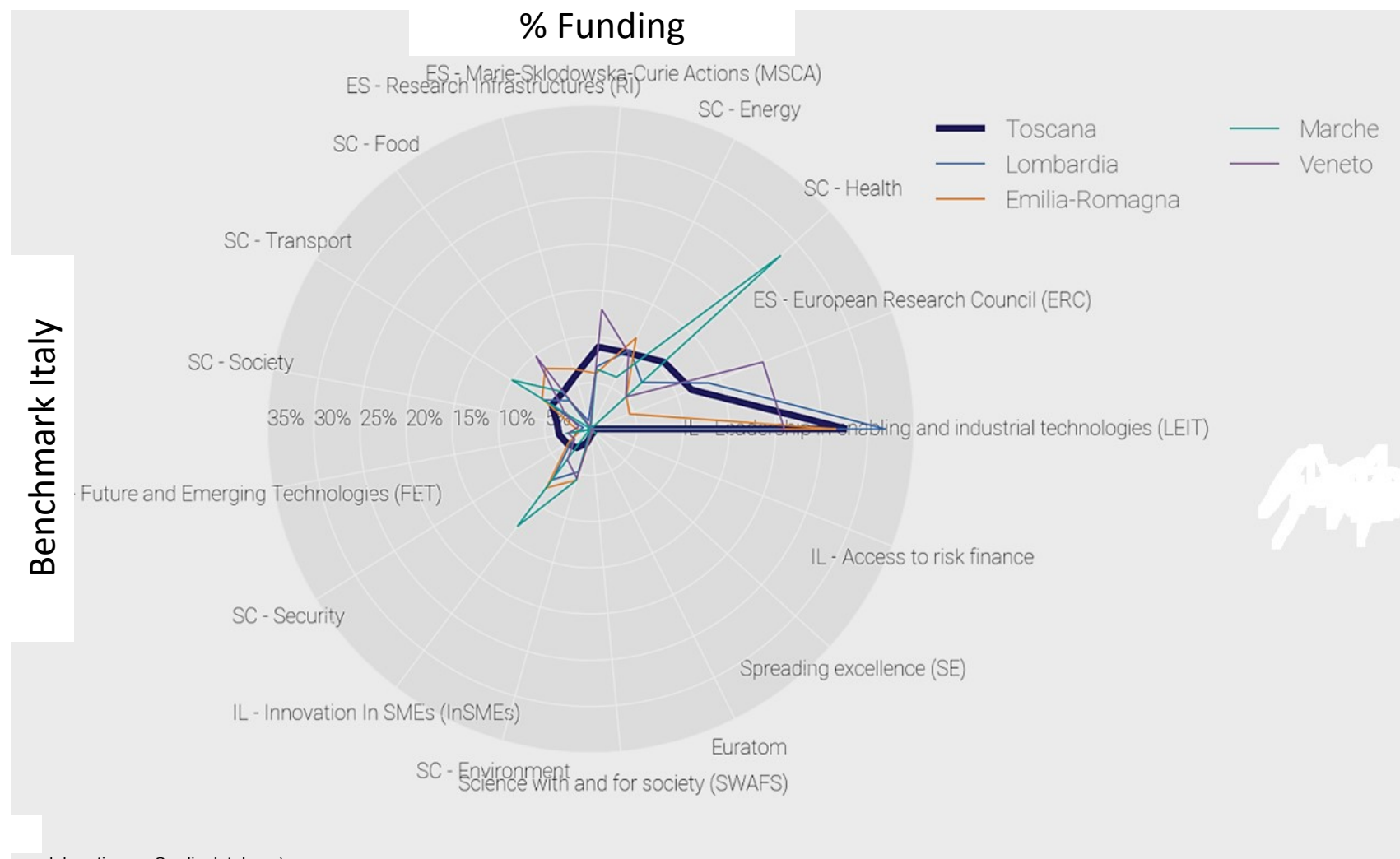
Strategy implementation: *main priorities* *in UE (H2020)*



Regional H2020 benchmarking

Region	N. projects	H2020 funding (M€)	H2020 Projects/ST empl. ‰	H2020 funding % / regional GDP
Emilia Romagna	313	€145,20	0,34	0,10%
Lombardy	650	€373,60	0,32	0,10%
Marche	50	€27,70	0,18	0,07%
Tuscany	253	€125,80	0,37	0.11%
Veneto	204	€94,80	0,23	0,06%
Catalunya (ES)	859	€527,80	0,44	0,26%
Oberbayern (DE)	954	€1.039,30	0,60	0,43%
Rhône-Alpes (FR)	254	€164,80	0,14	0,08%

Benchmarking specialisation indices



(Source: own elaboration on Cordis database)

Benchmarking specialisation indices



(Source: own elaboration on Cordis database)

S3 export and backwards linkages

(IRPET 2017)

Some findings

*“The macroeconomic dynamics of Tuscan exports has been driven by a small group of firms that constitutes the direct interface of the regional economy with global value chains. These firms are more **productive**, have a **higher share of high-skilled employees**, pay **higher wages** and are more prone to innovation, also in terms of advanced digital technologies related to **Industry 4.0**”.*

*“Firms specialized in **RIS3** are **more open to international trade**, their **contribution** in terms of direct and indirect exports largely **exceeds their share in the Tuscan economic system**”*

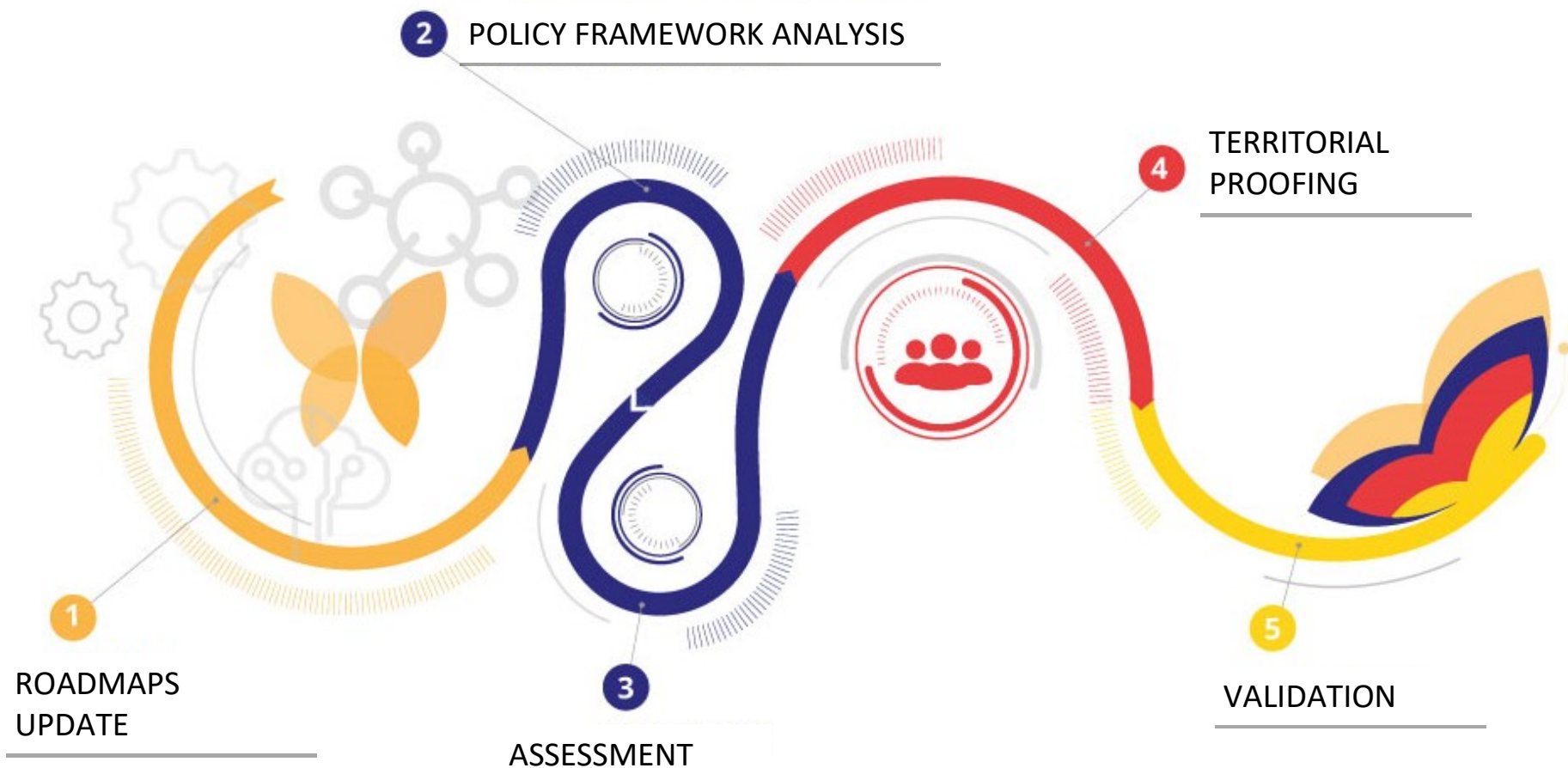
*“The configuration of **GVCs** of the goods involved in **RIS3** signals a **relatively high dependence on foreign value added**”*



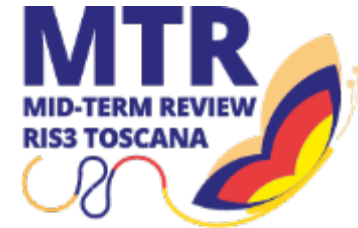
On-going steps



*On-going steps: **MTR** (Mid-Term Review)*



On-going steps: MTR



Main objectives

- Answer to technological progress and new societal challenges;
- Answer to new industry framework;
- Answer to new policy framework (national/international).

Main features

- Previous roadmaps update: Technological Districts engagement;
- Extra-regional positioning: H2020, GVCs, IDE, S3 Thematic Platforms;
- Technical expert validation + public consultation;
- Territorial proofing: enhance the cohesive effects of RIS3 and overcome development traps.

Beyond Tuscany and towards post2020!

Territorial proofing

Analyse the potential application of roadmaps to regional territories:

- correlation of the **innovation roadmaps** to **territorial VCs**;
- analysis of "**territorial stocks**" enabling roadmaps effectiveness.



Territorial proofing, together with roadmaps technical validation, provides a **place-evidence** contribution on the relevance of strategic roadmaps and their **expected impacts at territorial level**.

The aim of territorial proofing is to **combine excellence with relevance**: “**from rivalry to synergy**”!



Thank you for listening!

angelita.luciani@regione.toscana.it

<http://www.regione.toscana.it/smart-specialisation-strategy>

#RIS3Toscana

#RIS3ToscanaMTR