



# Climate KIC CSA Support Services Remco Kranendonk, Wageningen Research

28032019

Rural Development Innovation Week

ANNUAL EVENT OF THE TUSCANY REGION RDP EAFRD 2014-2020

## Content

- Climate on the Agenda of Agriculture
- Climate KIC
- CSA Booster
- Regional hub NL
- Support Services for Climate Smart Agriculture
- Perspective of CSA Services – CAP

# Climate on the Agenda

- National Governments – translation Paris agreement in Policy goals
- Climate at regional agenda's: regional innovation
- Sustainable Agriculture. Precision Agriculture, Circular Farming,
- EIP Focus Groups
- New CAP: focus on climate smart agriculture:

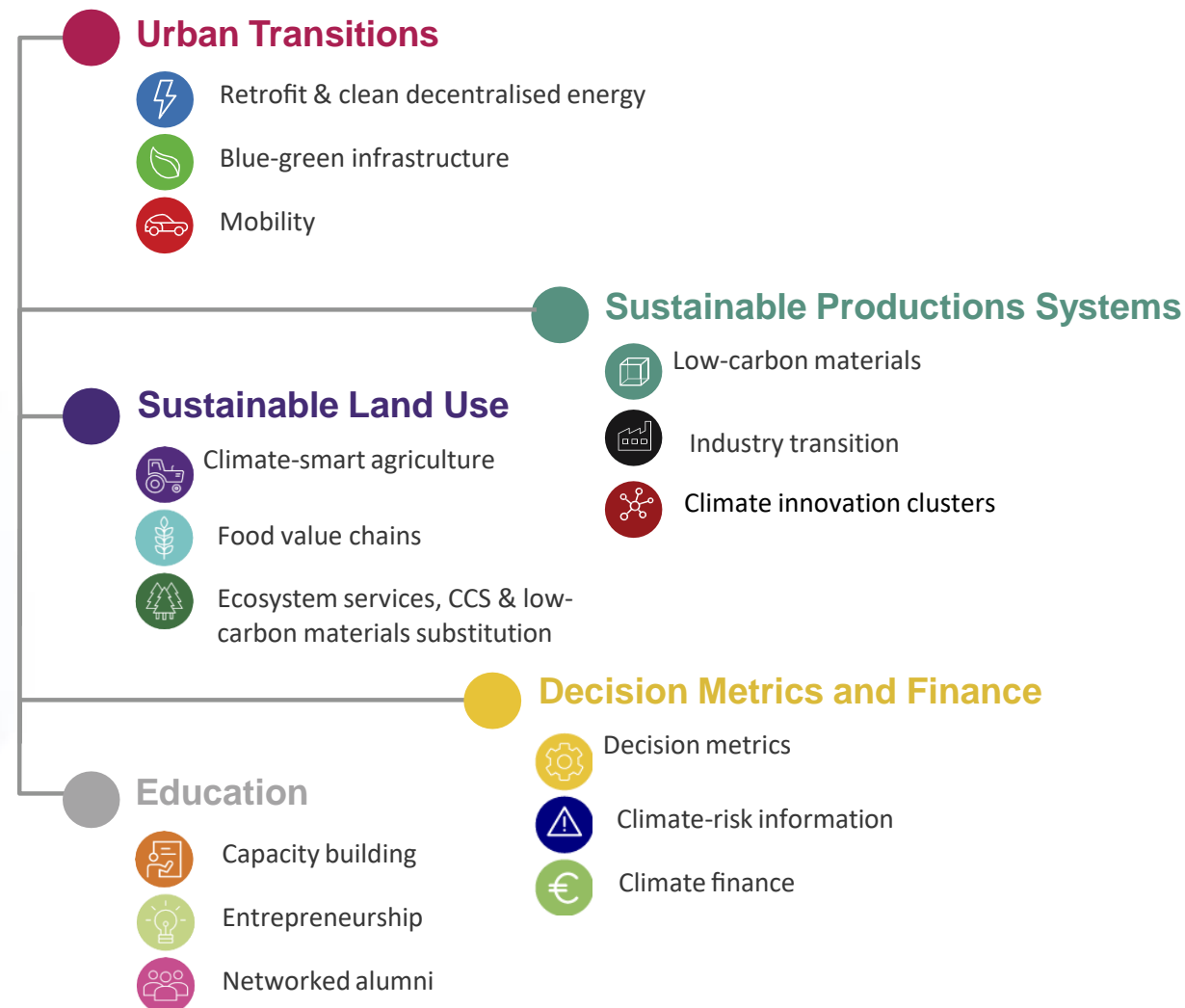
## DG Agri:

- *Agriculture is highly exposed to climate change highly as farming activities directly depend on climatic conditions. (As well as forests...)*
- *Agriculture also contributes to climate change contributes through the release of greenhouse gases into atmosphere*
- *However, agriculture and forestry can contribute to climate change adaptation and mitigation (for example by reducing greenhouse gas emissions and sequestering)*

**Climate-KIC** is Europe's largest *public-private climate innovation partnership*. It is one of three Knowledge and Innovation Communities (KICs) created in 2010 by the European Institute of Innovation and Technology (EIT), an EU body.

It catalyses and supports innovation and entrepreneurship activities directed at creating economically viable products and services addressing climate change mitigation and adaptation.

Its activities are driven by 3 climate change themes and 2 cross theme activities :



The **Climate-smart Agriculture (CSA) Booster** is a flagship programme of Climate-KIC's Sustainable Land Use (SLU) theme.

The **CSA Booster** acts as both an innovation platform and an accelerator where it brings together a multi-stakeholder ecosystem of public and private sector partners to incubate innovative and sustainable CSA solutions, catalyse their adoption and scaling, and to accelerate and de-risk investments into CSA across Europe and beyond.



## CSA B objectives:

- Productivity – sustainably increasing agricultural productivity, yields and incomes
- Climate adaptation – building resilience to climate change and enhancing food security
- GHG mitigation – reducing and removing GHG emissions wherever possible

In order to achieve our impact goal of making agriculture climate-smart and increase the application of CSA solutions, we will work towards 3 outcomes:

- Network: Link diverse actors across the agrifood value chain by creating a multi-stakeholder open innovation platform, growing local ecosystems and activating behavioral and dietary changes.
- Innovation: Catalyze the application and adoption of CSA innovations via identification, assessment, validation and scaling of CSA solutions.
- Finance: Accelerate and de-risk CSA investments by creating data analytics and tools, developing public-private financing schemes and insurance mechanisms, and blending climate and agriculture finance.



CSAb divides its activities into two pillars:

## **Pillar 1. Systematic change**

### **1. Open Innovation Platform – AGRISOURCE.ORG**

- Solution identification, assessment and matchmaking
- Facilitate knowledge sharing and co-creation
- Building and connecting user communities

### **2. Education and training**

- Multi-lingual CSA MOOC (English, French, German & Chinese)
- Creation of customized content for targeted audiences

### **3. Regional CSA hubs**

- Regional stakeholder engagement on a specific CSA local challenge and connect to the wider CSAb community
- Current CSA regional hubs in France, Italy, Netherlands and Nordic

## Pillar 2. Innovation portfolio

Facilitate & catalyse validation, testing and scaling of impactful (game changers) specific solutions

### 1. Agriculture technology

- Soil efficiency and resilience (inputs, biologicals, fertilizer)
- Farm tech (precision agriculture, robotics, etc.)
- Novel farming systems (urban ag, alt. protein, etc.)

### 2. Agrifinance and insurance

- Big data, remote sensing & risk analytics and MEL tools
- Risk-sharing insurance mechanisms
- "Climate-agrifinance" mechanisms

### 3. Innovation and Technical Assistance

- Consulting and advisory services (VCA, policy analysis/design)
- New business models



## Regional Hubs

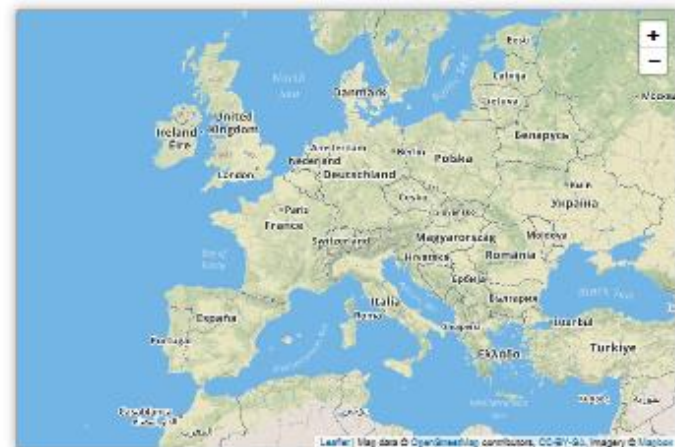
- France – INRA – Agrisource – Wine Sector
- Nordics – University of Copenhagen – Green proteins
- Italy – Emilia Romagna – Ibimet – EARDF support
- NL – Wageningen Research – CSA support service Organization

# Agrisource



Search... SEARCH

## GEOLOCATION OF YOUR AGRISOURCE NETWORK.



## NEWS.

- \$4.7M to Study Storing Greenhouse Gases in Soil**  
Nuff Institute Leads UC Project to Find Shovel-Ready Solutions for Carbon Sequestration  
15/02/2019
  - WEBINAR - Les services climatologiques comme moteurs de valeur pour le secteur vitivinicole méditerranéen**  
Compte-rendu du premier webinar MED-  
16/02/2019
  - French publication on agro-ecology**  
The agro-ecological transition of Southern agriculture  
11/02/2019
  - Call for applications for One Planet Fellowship**  
The One Planet Fellowship Initiative is operated by the African Women in Agriculture and Research (AWAR)  
11/02/2019
- [See all](#)

## EVENTS.

- Food Security and Climate Change: 4 per mille Initiative new tangible global challenges for the soil**  
The conference aims to build partnerships for soil sustainability  
18/06/2019 - 20/06/2019
- [See all](#)

## RECENTS PROJECTS.



**MED-GOLD Project**  
Turning climate-related information into added value for traditional Mediterranean Grapes, Olive and Durum wheat food systems.



**SIPHERS**  
Sustainable Phytochemicals for European Soil Protection. Use of plants, microorganisms and soil amendments for the remediation and recovery of soils polluted by heavy metals and hydrocarbons.



**LIFE-ADVICLIM**  
The LIFE-ADVICLIM project aims to study climate change adaptation and mitigation scenarios for a range of vineyards which represent the climatic diversity of European wine regions.

# CSA Regional Hub NL - The Challenge

Raise awareness and understanding  
How to arrive from idea to implementation?  
How to reach 30000 farmers?  
Lack of capacity to support farmers  
Fragmented landscape of policies, capacities and finance  
Many pilots, need to scale ups  
What measures have impact?  
How to prepare for next programming CAP period?

# position CSA regional Hub NL

---

The national coordination point for European Rural Development Fund. Budgets available for more sustainable agriculture, much focus on climate in next programming period, CAP Policies

The implementation of the National Agreement on Climate, where mitigation objectives have been set by government and partners from intermediates, business and civil society

The provincial climate policies and strategies: how to deal with climate problem in relation to different missions, challenges and Regulations

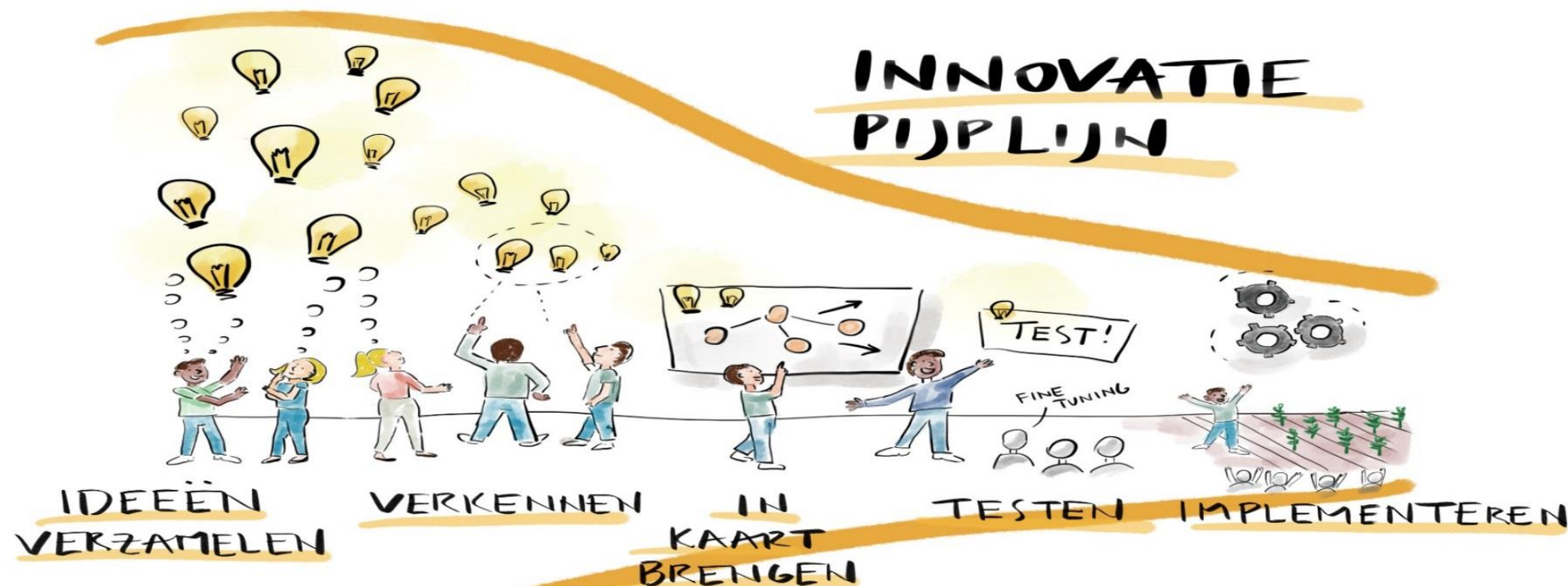
Regional innovation strategies of smart specialization and mission driver development. Regions develop integrated vision on regional development and sustainability, bio-economy and climate and creates an innovation ecosystem.

# Regional Hub NL: CSA Service organization, with following objectives

- **Support** the initiatives and innovations: **from ideation**, by exploration, piloting and demonstration **to implementation**
- **Support** initiatives **by bringing together capacities** as knowledge, networks, finance and human capital, from partners for CSA initiatives
- Developing and bringing together **support services covering all relevant aspects of change**: technologies, environmental, economical and social
- Developing and bringing together **services for target groups** as farmers, value chain partners and regional networks



# CSA services along the Innovation pipeline



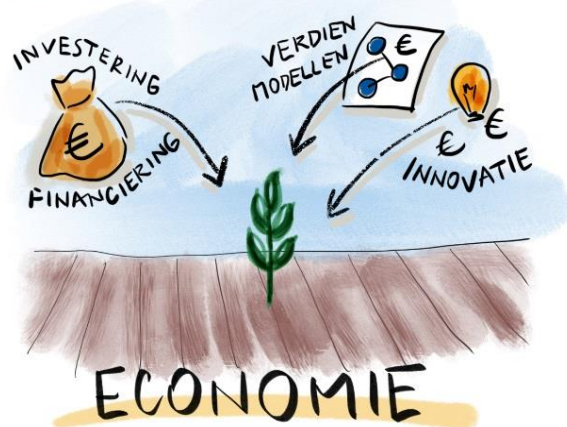
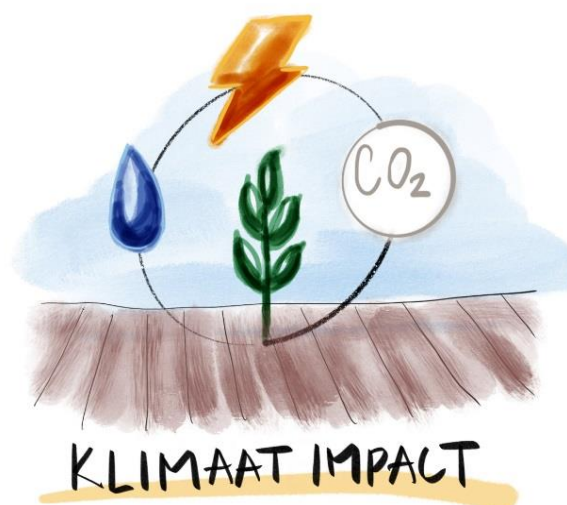
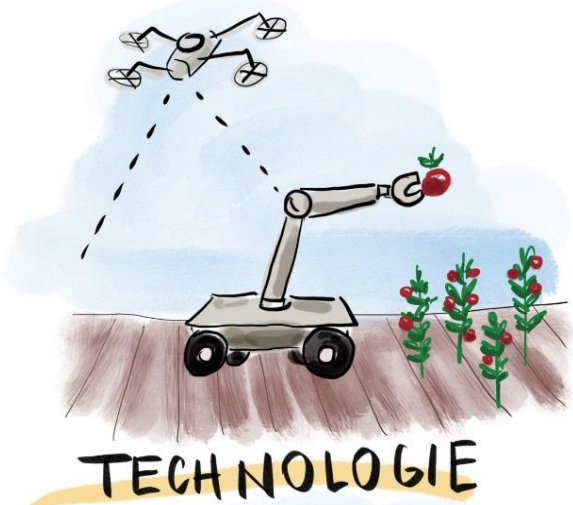
Design: Natasha Sena

Support the policies, initiatives and innovations: from ideation, by exploration, piloting and demonstration to implementation and commercialization

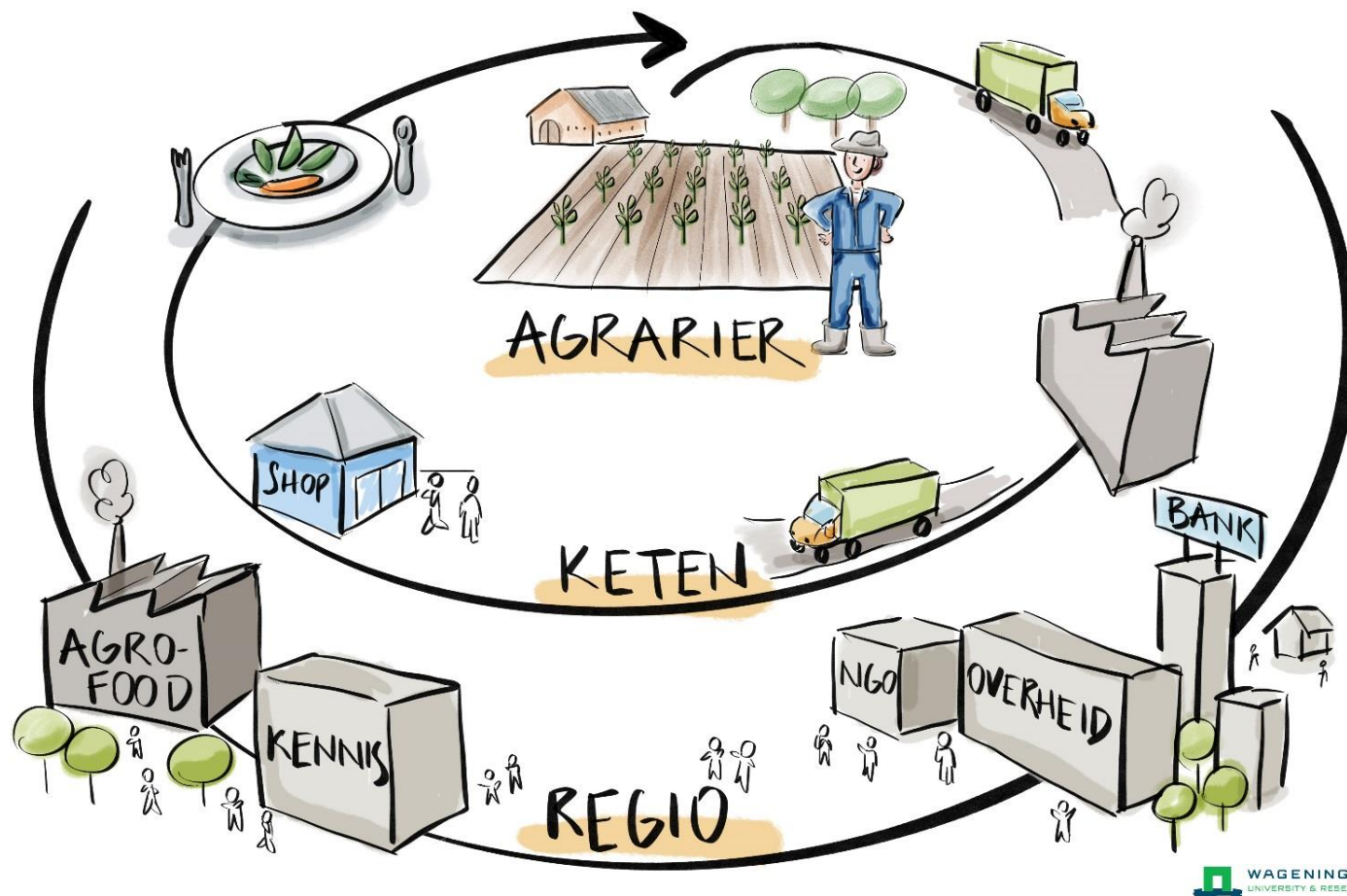


# Aspects of change

Design: Natasha Sena



Developing and bringing together CSA services covering all relevant areas of change: technologies, environmental, economical and social.



Design: Natasha Sena

Developing CSA services for  
farmers, value chain partners  
and regional networks

# CSA Services

CSA Community

CSA Dialogues and Events

CSA Atelier

CSA Expedition

CSA Community

CSA Monitor

CSA Assessment and Impact

CSA Solution Finder

CSA Benchmark

CSA Finance and Risk

CSA Education and Masterclass

CSA Capacity

CSA Policy

CSA Open Innovation Platform





Welkom Beleid Services ▾ Praktijk in beweging Partners Contact Login

## WELKOM OP HET PORTAAL LANDBOUW EN KLIMAAT



### De Nederlandse landbouwsector: klimaatslim en klimaatbestendig in 2030

De landbouwsector in Nederland wil klimaatslim worden. De sector ambieert een reductie van 3,5 Mton CO<sub>2</sub>-eq tegen 2030. Ook wil de sector beter leren omgaan met extreme droogte, hevige regenval, hitte en hagel. Ze wordt daarbij gestimuleerd vanuit het nationale beleid: [het klimaatakkoord](#) en [de nationale adaptatiestrategie](#).

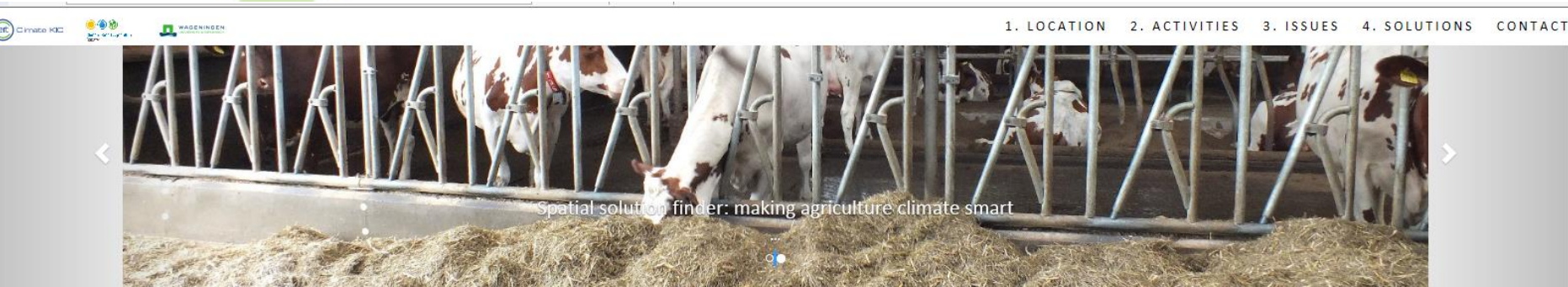
### De transitie

Die transitie vraagt om andere en aangepaste landbouwpraktijken. Het vereist bewustwording en inzicht in huidige klimaatprestaties en mogelijke maatregelen. Ook vergt het kennis, dialoog, capaciteit en financiële middelen om visie te ontwikkelen, keuzes te maken en om de nieuwe praktijken ook daadwerkelijk te organiseren en te realiseren.

### Services om de transitie te vergemakkelijken

Dit portaal biedt ondersteuning in de vorm van services aan om deze transitie te versnellen. Die services zorgen ervoor dat initiatiefnemers gemakkelijker aan de kennis, inzichten, inspiraties, financiering en samenwerkingen geraken om sneller tot realisatie te komen.

# CSA Spatial Solution Finder



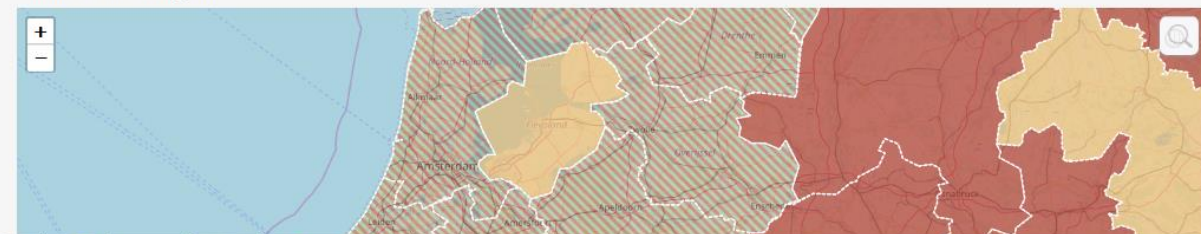
## Discover attractive and high potential climate smart solutions for your farm or region in 4 steps

The CSA Spatial Solution Finder is a tool aiming to help farmers, farm advisors, agri-food companies and policy makers find those solutions for climate-smart agriculture that fit farmers, farms and regions. This webtool focuses on livestock farming for dairy production.

### 1. Where is your farm located?

Use the map to select the region you are located or interested in. The magnifying glass on the map can help to find and identify your region of interest.

The type of livestock farming (intensity based on livestock units and share of grassland on your farm) determines the likely volume of GHG emissions. The expected impact of specific solutions for climate-smart agriculture in Europe depends on the biophysical and socio-economic context of a region.



Your region of interest is in the following Livestock Production Zone:

Grassland-dominant areas with high livestock densities in the region: Gelderland

Correct in the dropdown list, if you feel necessary or more representative for your specific conditions.

☒ Open Street Map

☒ Livestock production zone

1 Where in Europe  
do you live?

2 Which are your  
farming activities?

3 Which are your  
risks and  
opportunities?

4 Potential  
solutions

5 Which CSA  
solutions fit your  
situation?

6 Recommended  
CSA solutions

7 Expected impact



## Main learning CSA NL

- Position Regional Hub close to responsible policy makers and partners and in line with strategic objectives
- Position Regional HUB among networks, platforms, innovation ecosystems and farmer organizations, in order to be able to have an outreach with impact
- No direct relation with farmers, but support government, farmer organizations, intermediates, farmers advisory service providers
- Services are paid by large programs or by members, no costs for individual farmers
- Structure services; along the Innovation Pipeline and within the perspectives of the Theory of Change, to be able to support in all phases and from all perspectives [much focus on understanding and awareness!!]
- Develop and apply social services: CSA Community, CSA Dialogues, CSA regional planning;
- Mobilise and involve partners: we need all capacities for the transition into Climate Smart Agriculture



# Future

- Strengthen connection to provincial programs and regional strategies
- Connection to CAP
- Extend the network of Regional Hubs
- Test services with user groups in new regions or member states